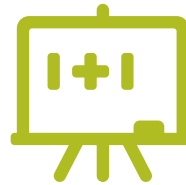


# More for our Kids: Mixed Delivery to Meet Critical Demand in Early Childhood

**M**arie was so excited when her four-year-old daughter, Ella, was accepted into her school district's Pre-K program. She has been with a wonderful in-home child care provider for the last four years, but she is ready to go to school. It is a great program, it is in the same building where she will attend Kindergarten and it is free. This is a huge relief since Marie also has an infant daughter and having two children in child care is very expensive. Unfortunately, Marie does not qualify to receive any child care subsidies through state or federal sources because she is just over the income eligibility limit (even though she only makes \$32,000 per year). However, Marie is worried. The school day is only 9:00am-1:00pm. Maria works from 8:30am-4:30pm and her in-home provider is not within the school district's boundaries. She could try to find a different before school program, but those are not free and she is unsure of the quality. And what about after preschool ends? Where will Ella go? Marie can't be home in the middle of the day to get her off of the school bus or she will lose her job.



The school and the in-home provider want to serve this family, but neither have the resources they need to provide transportation or extended hours.



Wouldn't it be wonderful if both providers had the funding they need to support this family and intentionally coordinate their services? Advocating for a mixed delivery system can make this a reality for parents like Maria.



Working parents need access to full day, full year options. No single provider can address our early childcare problem in MO alone. Only through the combined efforts of providers through a mixed delivery system can we begin to address the vast need.

## What is a Mixed Delivery System?

“[Early childhood education] services for children from birth to kindergarten entry, delivered through a range of public and private programs, providers, and settings, including licensed family and center-based childcare, Head Start, public schools, and faith- and community-based programs.”

– AMERICAN ENTERPRISE INSTITUTE (AEI)

---

### Missouri by the Numbers

**449,240**

CHILDREN UNDER 6

---

**291,000**

CHILDREN UNDER 6 WITH BOTH  
PARENTS IN THE WORKFORCE

---

ONLY  
**141,215**

SPOTS IN LICENSED  
COMMUNITY-BASED EARLY  
CHILDHOOD PROGRAMS

---

ONLY  
**1% OF 3 YEAR OLDS &  
2% OF 4 YEAR OLDS**  
SERVED BY STATE-FUNDED  
PRESCHOOL

---

## A way forward.

Quality can exist anywhere with the right investment. High-quality, community-based early childhood providers and public preschool options help meet essential developmental needs of children as well as parents' workforce needs.

We must partner and fund across early childhood provider settings to be able to support the needs of families and their children in Missouri.



“The existing early education system is very diverse... Collaborations with community-based programs ultimately enable [public] school administrators to expand access to and increase the quality of all programs, no matter where they are housed.”

–PRE[K]NOW, A CAMPAIGN OF THE  
PEW CENTER ON THE STATES



[www.southside-ecc.org](http://www.southside-ecc.org)